

## Parker GU10 Wall Light

**Reference:** PRKW230  
**Collection:** Parker  
**Designer:** Kris Van Puyvelde  
**Category:** Wall Lights

### Packages:

Box 1 49 x 32 x 20 cm 3.1 kg x1

### Dimensions:

**Height:** 42 cm  
**Width:** 16 cm  
**Length:** 16 cm

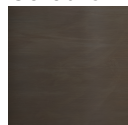
**Net weight :** 3.1 kg



### Technical info

**Protection class :** I  
**Energy efficiency class :** A-G  
**Luminous flux (LM) :**  
**Voltage (V) :** 230V  
**Wattage (W) :** MAX 5 W  
**Dimmable?**  
**Colour temperature (K) :**  
**Adjustable angle?**  
**IP rating :** IP-55  
**Switched?**  
**Lamp :**  
**Lamp included?**  
**Fitting :** GU10  
**Driver included?** Yes  
**Cable length :**  
**Driver required?**  
**Driver option :**  
**Installation option :**

### Colours



AB

### Product description :

The Parker lamps are made from antique brass, which has been aged to achieve a dark grey color. This wall lamp features a 3-watt LED with a light output of 450 lumens and a color temperature of 3000K. With an IP65 rating, it is highly suitable for outdoor use. The driver is built into the lamp, allowing for a direct connection to a 230-volt power supply.