

## Parker GU10 Pathway Light

**Reference:** PRKP230  
**Collection:** Parker  
**Designer:** Kris Van Puyvelde  
**Category:** Bollard Lights

### Packages:

Box 1	242 x 38 x 23 cm	6.7 kg	x1
Box 2	15 x 15 x 52 cm	1 kg	x1

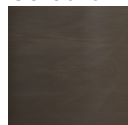
### Dimensions:

**Height:** 230 cm  
**Width:** 22.5 cm  
**Length:** 22.5 cm

**Net weight :** 7 kg



### Colours



AB

### Technical info

<b>Protection class :</b>	I
<b>Energy efficiency class :</b>	A-G
<b>Luminous flux (LM) :</b>	
<b>Voltage (V) :</b>	230V
<b>Wattage (W) :</b>	MAX 5 W
<b>Dimmable?</b>	
<b>Colour temperature (K) :</b>	
<b>Adjustable angle?</b>	
<b>IP rating :</b>	IP-55
<b>Switched?</b>	
<b>Lamp :</b>	
<b>Lamp included?</b>	
<b>Fitting :</b>	GU10
<b>Driver included?</b>	
<b>Cable length :</b>	5 M
<b>Driver required?</b>	
<b>Driver option :</b>	
<b>Installation option :</b>	

### Product description :

The Parker lamps are made from antique brass, which has been aged to achieve a dark grey color. This wall lamp features a 3-watt LED with a light output of 450 lumens and a color temperature of 3000K. With an IP65 rating, it is highly suitable for outdoor use. The driver is built into the lamp, allowing for a direct connection to a 230-volt power supply.