

Beamy bollard lamp 100cm teak GU10

Reference: BMY100230
Collection: Beamy
Designer: Kris Van Puyvelde
Category: Bollard Lights

Packages:

Box 1 108 x 22 x 19 cm 5.3 kg x1

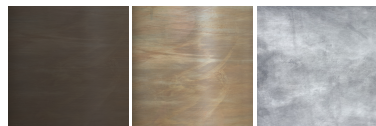
Dimensions:

Height: 100 cm
Width: 13 cm
Length: 12 cm

Net weight : 5.8 kg



Colours

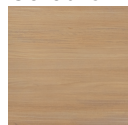


AB

WB

Z

Colours



W

Technical info

Protection class : I
Energy efficiency class : A-G
Luminous flux (LM) :
Voltage (V) : 230V
Wattage (W) : 5W
Dimmable?
Colour temperature (K) :
Adjustable angle?
IP rating : IP-44
Switched? Yes
Lamp : led
Lamp included?
Fitting : GU10
Driver included?
Cable length :
Driver required? Yes
Driver option : JUB5625
Installation option :

Product description :

The Beamy collection offers versatile lighting options available in antique zinc, antique brass, weathered brass, or coated white or black. Each piece combines classic design with modern functionality, providing stylish and durable lighting solutions for any space.